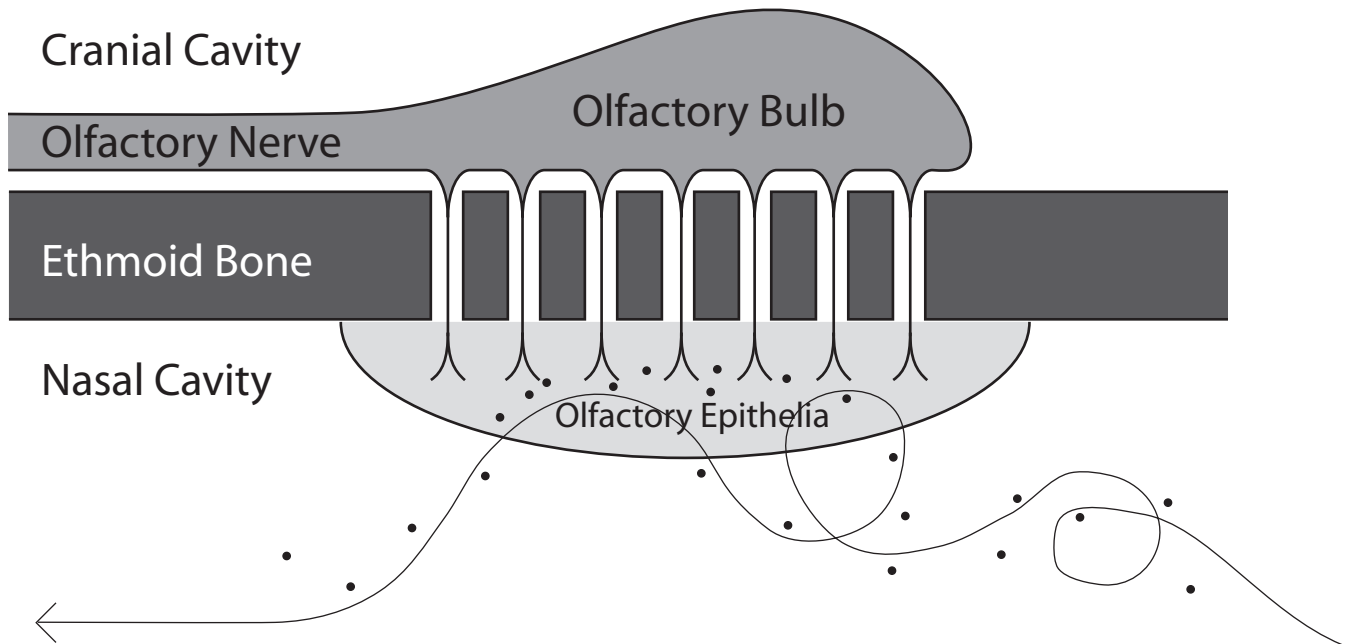


Olfactory Epithelia

In the illustration below, note the *olfactory nerve* coming from the brain and forming the *olfactory bulb*. The two olfactory bulbs rest over the *cribriform plates of the ethmoid bone*; and the cribriform plate will have *olfactory foramina* through which *nerve processes* will



pass. In the nasal cavity, the processes will expose receptors for air borne chemical substances that dissolve in the mucous of the *olfactory epithelia*. These nerve process will then depolarize and send impulses to the brain where the signal will be translated into a sense of smell.